

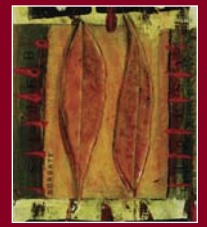
The Ending Violence Association of BC  
**Emerging Issues in Anti-Violence:**  
Working to Achieve Safety, Justice and Healing  
for Women and Children

**Training Forum, March 1 & 2, 2012**  
**Special General Meeting, March 3, 2012**  
**Sheraton Vancouver Airport Hotel, Richmond, BC**



*Funding provided by the BC Ministry of Public Safety and Solicitor General  
and the Department of Justice Canada.*

# EMERGING ISSUES IN ANTI-VIOLENCE: Working to Achieve Safety, Justice and Healing for Women and Children



**B**ased on feedback from EVA BC member programs throughout the past year, this year's Training Forum, "Emerging Issues in Anti-Violence: Working to Achieve Safety, Justice and Healing for Women and Children", has been designed to focus on topical, emerging issues that have been identified by frontline anti-violence workers, as well as provide some introductory basics for newer Stopping the Violence counsellors, Community-Based Victim Service and Stopping the Violence Outreach and Multicultural Outreach workers who have not previously had the opportunity to take core competencies training.

We all know that workers in the anti-violence field are constantly called upon to address a complex range of factors and systems when responding to the violence against women and children. There are often large-scale systems involved in women's experiences and situations that can include health, law enforcement, justice, financial assistance, child welfare and others. Any number of other realities may also contribute to a woman's individual experience, such as immigration, mental health, substance use, the complexities of colonization, sexual orientation, living rurally, and having children. The possible factors and combinations are endless and unique to every individual.

The Training Forum will, as always, take place against the backdrop of the high numbers of sexual assaults and cases of domestic violence that exist in British Columbia, including the high homicide and missing women rates of Aboriginal women in this province. In light of the horrific findings that emerged from the trial of Robert Pickton, the provincial government has established the Missing Women Commission of Inquiry to look into the conduct of police investigations of women reported missing from Vancouver's Downtown Eastside between January 23, 1997 and February 5, 2002. EVA BC and West Coast LEAF, along

with other community and Aboriginal groups, applied to participate in the inquiry, but many had to withdraw when the government refused to provide funding support for the necessary legal costs of the groups. EVA BC did not want to participate in a process that essentially shut out those who were closest to the missing and murdered women and their communities.

The ongoing tragedy of the Highway of Tears is another ever-present reminder that there is much more work to be done to address the crisis of missing and murdered women in this province and across the country if family, friends and communities are to obtain answers, justice and healing. Keynotes this year will be talking about justice and healing on the Highway of Tears and empowerment of Aboriginal women, as we work towards ending violence and find new ways to engage all systems to better protect and respect Aboriginal women. Other keynotes will explore developing ethical frameworks around working with intimate partner violence in LGBTQ lives and what "culture" means in understanding sexualized violence and safety considerations for immigrant, refugee, and non-status women in Canada.

Workshops this year will include both an introductory "snap shot" of core competencies training for each of the program types, as well as emerging issues training on issues in the anti-violence field. While the introductions to core competencies for Community-Based Victim Services, STV Counselling and STV Outreach and Multicultural Outreach cannot and does not replace the full core training modules, they will give participants an understanding of the scope and depth of the full trainings and some practical information and tools that can be immediately utilized in the field.

Important emerging issues that will be covered include a wide range of topics such as: responding to families

# EMERGING ISSUES IN ANTI-VIOLENCE: Working to Achieve Safety, Justice & Healing for Women & Children *continued*



where deaths have occurred or supporting families where a loved one has gone missing; creating alliances to address oppressions; safety planning with women and children; a strategic framework to address violence against Aboriginal women; policy and legislative issues regarding safety for immigrant, refugee and non-status women; working with marginalization in the context of sexual assault; responding to same-sex relationship violence; and working with women who themselves use violence in relationships.

We are pleased that EVA BC will once again be able to offer travel and accommodation subsidies this year for one representative from each Community-Based Victim Services, Stopping the Violence Counselling and Stopping the Violence Outreach and Multicultural Outreach program. Of course, agencies are welcome to send as many staff members as they wish. Registration

fees and travel and accommodation subsidies are outlined in this package.

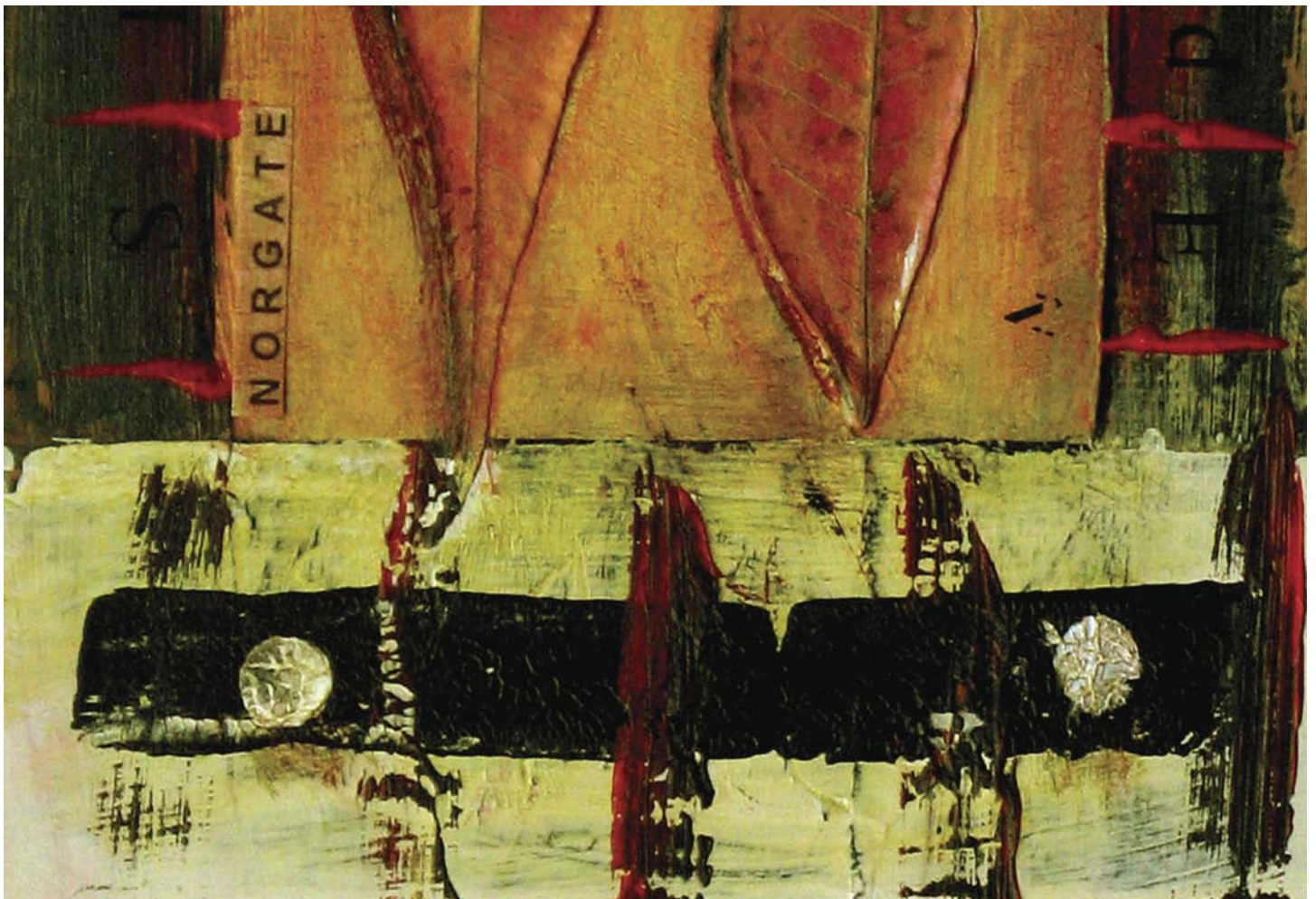
We are looking forward to seeing as many of you as possible at this year's Training Forum and hope you will be able to attend and participate with your colleagues from across the province, as well as engage with the many knowledgeable presenters who will be on hand to deliver keynote addresses and workshops.

*Tracy Porteous*

Executive Director, EVA BC

On behalf of the Training Forum Planning Committee

*\* Artwork throughout the program donated by Sheila Norgate*



# 2012 Special General Meeting



**Saturday, March 3, 2012**

**9:00AM-1:00PM**

**Sheraton**

**Vancouver Airport Hotel**

**Richmond, BC**

## Agenda

- ❖ Welcome and call to order
- ❖ Year in review
- ❖ Open member discussion
- ❖ Break (coffee, muffins and fruit provided)
- ❖ EVA BC business
- ❖ Election of Board of Directors

We encourage participants to stay on after the training forum and join us for EVA BC's Special General Meeting at the same venue on March 3<sup>rd</sup>.

Our Special General Meeting is an opportunity to:

- connect with other advocates, counsellors and managers within your region and across the province,
- meet or reconnect with EVA BC's staff and Board,
- recognize our accomplishments over the past year,
- identify critical issues and look to the year ahead.

We will be holding elections for regional representation on EVA BC's Board of Directors for the coming year. Directors serve two-year terms, so not all seats will be up for election this year. Please contact your current Board representative to ask her intentions and determine if there will be a vacancy in your region. We encourage prospective Board members to share their interest with other members in their region, obtain prior approval from their agency to sit on the Board, and come to the Special General Meeting prepared to speak about themselves and what they bring to EVA BC.

Member programs that are in good standing and have paid their membership dues at least 30 days prior to the Special General Meeting will be eligible to vote. If you are unsure about your membership dues, please contact our office at 604-633-2506 ext 10 or [evabc@endingviolence.org](mailto:evabc@endingviolence.org).

We look forward to seeing you at this Special General Meeting!



# Forum at a Glance



## Thursday MARCH 1

### 7:30 Registration & Coffee

Information Tables

### 8:30 Welcome & Opening

First Nations Opening

Greetings from the Mayor of Vancouver

### 9:00 Keynote Address

**Terry Swan**

Aboriginal Perspectives on Violence Against Women

### 9:40 Break

### 10:00 Keynote Address

**Janice Ristock**

Intimate Partner Violence in LGBTQ Lives:  
Developing Ethical Frameworks.

### 10:45 Announcements & Door Prizes

### 11:00 Concurrent Workshops

- Introduction to STV Counselling
- Introduction to STV Outreach and Multicultural Outreach Services
- Introduction to Community-Based Victim Service Work
- Domestic Violence and Children's Safety with a Focus on Empowerment and Effective Communication
- Working with Dissociation
- Working with Women Who Use Violence

### 12:00 Lunch Provided

- Odin Books
- Healing Practitioners

### 1:15 Concurrent Workshops continued

### 5:00 No Host Reception/Networking

Ending Violence Association and the FREDa (Feminist Research Education Development Action) Centre invite you to join them for this informal networking opportunity.

The FREDa Centre for Research on Violence Against Women and Children is a joint collaboration between academics at Simon Fraser University and community and women's organizations working at the grass-roots level. The FREDa Centre is committed to participatory action research, focused specifically on violence against women and children, and works in the interests of the community to end this violence.

## Friday MARCH 2

### 8:00 Registration & Coffee

Information Tables

### 8:30 Welcome

Mayor of Richmond

BC Lions Representative

Be More Than a Bystander Campaign:  
Public Service Announcements

### 9:00 Keynote Address

**Brenda and Matilda Wilson, Carrier Sekani Family Services, Highway of Tears Governing Body**

Justice and Healing on the Highway of Tears:  
Supporting Families and Communities

### 9:40 Break

### 10:00 Keynote Address

**Sujata Warrior**

Death by Culture: Engaging Cultural Differences in  
the Context of Violence Against Women

### 11:00 Keynote Address

**Kamaljit Lehal**

Understanding the Safety Considerations for  
Immigrant, Refugee and Non-Status Women

### 12:00 Lunch Provided

- Odin Books
- Healing Practitioners

### 1:15 Concurrent Workshops

- Working with Sexual Assault Survivors: Emerging Issues of Marginalization
- Thinking Outside the Box: Responding to Same Sex Relationship Violence
- Empowerment and Advocacy with Families Coping with Loss
- Working with Women Using Substances
- Death by Culture: Achieving Cultural Competency in Domestic and Sexual Violence Cases



## Aboriginal Perspectives on Violence Against Women

**Terry Swan**

In 2007 the Ontario Federation of Indian Friendship Centres and the Ontario Native Women's Association released the Strategic Framework to End Violence Against Aboriginal Women. It has since been endorsed by the Métis Nation of Ontario and 12 Independent First Nations. A brief discussion will share the process of engagement with relevant stakeholders all dedicated to ending violence against Aboriginal women, and the government of Ontario's response.

*Terry Swan is a Cree Salteaux woman of the Fish Clan originating from Cold Lake First Nation in Alberta. She brings over 20 years experience in the area of family violence prevention, education and healing initiatives within Aboriginal communities.*

## Intimate Partner Violence in LGBTQ Lives: Developing Ethical Frameworks

**Janice Ristock**

LGBTQ lives continue to be at the margins of most academic and professional work on violence and abuse in relationships. At best, same-sex partner violence is simply "added on" to current understandings and practice without attending to the specific contexts of violence in, for example, gay men's relationships or queer women's experiences in relationships with transsexual men. This presentation will review what we know, what we need to know, and where we need to go in order to better respond to same-sex/gender relationship violence. The presentation will draw attention to the implications of different ways of framing intimate partner violence in lgbtq lives (for example, through a gender lens; through a framework of 'at risk'; through an "LGBTQ" lens). The presentation will show the need for an intersectionality framework informed by queer theory. Finally, the presentation addresses the need for an ethical stance of response to be taken if we are to get at the root causes of violence.

*Dr. Janice Ristock is Associate Vice-President (Research and International) and Professor of Women's and Gender Studies at the University of Manitoba. She has been active in the feminist anti-violence movement for over 25 years. She engages in feminist community-based research to address LGBTQ relationship violence, as well as health and mental health issues facing gender and sexual minorities. She received a book award for "No More Secrets: Violence in Lesbian Relationships" from Division 44 (Society for the Psychological Study of Lesbian, Gay and Bisexual issues) of the American Psychological Association for making a distinguished contribution to LGBT psychology. She has a newly released edited book, "Intimate Partner Violence and LGBTQ Lives" from Routledge Press.*





## Justice and Healing on the Highway of Tears: Supporting Families and Communities

**Brenda Wilson and Matilda Wilson**

*Carrier Sekani Family Services, Highway of Tears Governing Body*

Brenda and her mother Matilda will share how they have been advocating for answers for 17 years, since their sister and daughter, Ramona, was murdered on June 11, 1994. Ramona's murderer has not been caught.

*Brenda Wilson is of Gitskan/Wetsuweten descent. Her father is the late Thomas Wilson of Hagwilget (Tsay Kva) and her mother is Matilda M. Wilson of Gitanmaxx (Hazelton). Matilda was born in Hazelton and moved to Smithers when she was 9 years old. She has 3 beautiful children and 3 beautiful grand children. Brenda graduated from the Human Service Worker program in 1991, studied Early Childhood Development and received a Diploma in 2009, and is presently studying Child and Youth Care to acquire a Bachelors Degree. Brenda's goal in life is to ensure answers are found in the unsolved murder cases in Northern BC.*

## Death By Culture: Engaging Cultural Differences in the Context of Violence Against Women

**Sujata Warriar**

This presentation will critically explore and challenge the notion of "culture". It will provide a new definition of "culture" that includes intersection and interconnection of oppressions with an important focus on sexualized violence across "culture". Transnational issues in the definition of a lifetime spiral of sexual and domestic violence will be explored with a special emphasis on how it impacts the lives of marginalized women. A "World Traveling Method of Cultural Competency," will provide the fundamental framework to understand and lend support to the frontline work with women dealing with sexual violence.

*Sujata Warriar is the Director of the New York City Program of the New York State Office for the Prevention of Domestic Violence. She has trained extensively at the local, state, national and international levels on the issue of cultural competency for*

*various professionals and has delivered numerous keynotes on the issue of culture, competency, relativism, domestic violence and violence against women. She has written and published numerous articles on violence against women in the international context.*

## Understanding the Safety Considerations for Immigrant, Refugee and Non-Status Women

**Kamaljit Lehal**

Beyond the project: BC has suffered the deaths of 153 people in the last 15 years alone related to domestic violence. What you may or may not know, is that many of these people were new to Canada and it is therefore critical that we work together to look at the unintentional policy barriers that are affecting the safety of women and children, especially for those in this important group of Canadians.

We recognize that there are numerous gaps in policy and legislation, which result in serious disadvantages and an increased danger of violence for many immigrant, refugee and non-status women in British Columbia. Our project work aimed to improve policy and law reform to increase the safety of immigrant, refugee and non-status women. The outcomes accomplished in making roadways to having a positive response to these situations are many and there is more work to be done - Kamaljit will provide an analysis of where we go from here and what that means for you when working with women.

*Kamaljit Lehal is a lawyer with her own practice in Delta. She was called to the bar in 1990. She practices immigration law, administrative and personal injury law. In the area of immigration law she has represented women successfully on gender persecution grounds. She has been a Director on the board for OPTIONS Surrey Community Services since 1996, a community service organization that operates local battered women's shelters. In addition, Kamaljit has been involved with the Indo-Canadian Women's Organization, in which she participated in various committees. She is also an alternative chair for the BC Review Board. Aside from her work and social commitments, Kamaljit is busy raising four children.*



## Introduction to STV Counselling

The foundation of STV counselling is an in depth understanding of trauma and its biosocial, psychological manifestations and the ability to work with its manifestations within an anti-oppression framework. Both counsellors and clients come together seeking a common goal with disparate meanings of our lived experiences. Our social identities inform both our understanding of our traumatic experiences and the possibility of healing.

A safe space will be created to explore the intersection of identity, lived experience and trauma and how to work with these realities without replicating structures of inequality. Participants will have an opportunity to explore the principles of anti-oppression work, how to bring these principles into practice and how to create safe conversations that acknowledge difference and create bridges of understanding across them.

*Susan Armstrong has been living in the north of BC and working in non-profit management for three years. She has over twenty years experience working as a therapist, clinical supervisor, researcher and community educator in the field of trauma including years as a STV counsellor and several years with EVA BC as Program Manager. Susan has established a sexual assault response team, written and implemented community wide sexual assault protocols, conducted research on sexual exploitation of youth and taught at various colleges.*

*Nila Somaia is STV Program Manager with EVA BC. She has worked in the counselling field for 15 years, 5 of them in Stopping The Violence Counselling programs. Nila's work has been largely informed by the narrative approach to counselling, acknowledging that life stories and the impact of societal pressures are fundamental to insight and change at the personal level.*

## Introduction to STV Outreach and Multicultural Outreach Services

This skills-based session is designed for new STV Outreach Workers, providing an introduction to Outreach work context and skills. Participants will gain an understanding of the scope of Outreach work and have the opportunity to practice skills, including effective ways to connect with and support women in their communities. The session will emphasize bringing a feminist anti-oppression perspective to Outreach work with women, the importance of ethics and boundaries, working collaboratively with other services in the community and addressing the stress related impacts of Outreach work.

*Marilyn George is a First Nations Gitksan woman, originally from the Hazelton area, but grew up in Terrace, BC. She is the Stopping the Violence Outreach Service Worker at Northern Society for Domestic Peace in Smithers, and has enjoyed this position for 6 years. Marilyn brings approximately 13 years of frontline experience, working with women both on and off reserve.*

*Morgen Baldwin is an anti-violence worker with 20 years of experience in the area of violence against women. She works with Community Coordination for Women's Safety and recently joined Ksan House Society in Terrace as director of programs, working with STV Outreach and Counselling, Community-based Victim Services/Sexual Assault Centre and the Transition Home*



## Introduction to Community-Based Victim Service Work

This workshop provides an introduction to the scope of community-based victim assistance work and skills based in feminist practice and theoretical values. The workshop will provide an overview of the coordination response in place to assist them in community collaborations.

*Michelle Novakowski has a background in community development and has worked in the anti-violence field for over 15 years in crisis intervention, counselling, coordination and training. As chair/coordinator of the Violence Against Women In Relationships Committee in Dawson Creek, she helped develop a model for case tracking that has become a best practice template. In 1997 Michelle began work in Nanaimo as the Coordinator for Haven Society's Community-Based Victim Service Programs and developed VAWIR Coordination there. Michelle has delivered Victim Services core training through the Justice Institute and sexual assault training for EVA BC. She developed the Easy Reference Guide to Bill C-2 and was on the project team for the Keeping Women Safe: Eight Critical Components of an Effective Justice Response to Domestic Violence report. She has been a Regional Coordinator with CCWS since May of 2006.*

*Bally Bassi has been Community, Social and Justice Services manager at Prince George and District Elizabeth Fry Society for over 19 years. She has sat at national, provincial and local consultation tables on violence against women. She co-chairs the Prince George violence against women coordination committee. Bally is the Co-Chair of the Board of EVA BC and also sits on the board of ASPECT (Association of Service Providers for Employability and Career Trainers).*

## Domestic Violence and Children's Safety with a Focus on Empowerment and Effective Communication

Safety planning and identification of risk factors is a complex process. Ideally it involves coordinated development of intervention strategies and information sharing protocols between different agencies working together at the local level. Participants will explore strategies to work with women to identify the complexity of risks affecting safety and facilitate/coordinate safety planning which includes liaising with justice system personnel and others, as appropriate.

The goal of this workshop is to help participants gain a solid understanding of collaborative risk identification and safety planning for women and their children.

In this training we will:

- Introduce participants to resources that assist with risk identification and safety screening.
- Give participants the opportunity to hone their skills and become comfortable with these tools and resources, through group exercises and case studies.

*Gail Edinger, who is a Regional Coordinator with Community Coordination for Women's Safety, has over 20 years experience working in British Columbia's anti-violence sector in community development and coordination, counselling, advocacy, and training. She has facilitated strategic planning with many systems and community groups in support of their efforts to improve and create a consistent safety response for women who have experienced violence. In her current role with CCWS, Gail facilitates community work to build a cross-sector coordinated approach to gender-based violence.*

*Kat Fong is a motivated Specialized Victim Support Worker for Children and Youth. Her passion to empower children resulted in helping 4x the number of families than the year prior at Cameray. In her 15 years of experience working*



*with kids, she co-founded the Willingdon Youth Committee which provided programs for youth to keep off the streets, regularly presents to parent groups and counsellors on the benefits of victim support and recently, she participated on the Safety Planning Advisory to create a toolkit for working with children experiencing domestic violence. Kat has a Criminology degree, is an exercise nut, and invents kid's toys on the side.*

## Working with Dissociation

Survivors of violence and abuse often suffer from some level of dissociation. Dissociation is the compartmentalization of different aspects of experience and mental process, such as memory, thoughts and feelings. Dissociation can range from daydreaming to complicated separations of self and often involves a lack or awareness of shifts in moods or states.

Working with dissociation can be challenging. This workshop will provide practical techniques for identifying and working with dissociation. Understanding the continuum of dissociative experiences, helping clients separate the past from the present, recognizing triggers and learning to develop a sense of control of the present and future is key.

**Maureen McEvoy** is a Feminist Psychotherapist who has worked in the field of violence against women for many years, including supervising STV counsellors. She co-wrote (with Maggie Ziegler) the "Best Practices Manual for STV Counsellors". She will be teaching in the Justice Institute of BC's new complex trauma certificate program. In addition, the third edition of her "Balancing Conflicting Interests: A counsellor's guide to the legal process" will be published in the fall of 2011.

## Working with Women Who Use Violence

Women's use of violence in intimate relationships has received much attention in recent years. More and more women are reporting that they have been arrested and charged with being violent to their male partners. Women's use of violence has been viewed as being just as violent as men's and that men's and women's violence is equal in motivation and impact, which has led to a simplification of what is often a complex relationship dynamic. Women who use violence in relationships are often referred to services for abusive men, refused services by women's anti-violence programs, misunderstood and pathologized. The purpose of this workshop is to break down barriers, provide a greater understanding of the ways in which women use violence, and explore strategies for helping women find alternatives to violence.

**Cathy Welch** is a feminist counsellor who has worked in community anti-violence agencies and within the mental health system since the mid-1980s. She has worked as a front-line worker and as an anti-oppression educator and community organizer around issues of violence against women, including lesbian relationship violence, heterosexism and homophobia, the connections between violence, substance use and women's mental health and women's use of violence in relationships. Currently, Cathy is an STV Counsellor and Program Supervisor in a rural community-based sexual assault centre.

**Jude Marleau** is a feminist counsellor who has worked in the violence against women field since 1990. She worked for the Victoria Women's Transition House, the Victoria Family Violence Project and for the past 10 years she has worked at the Victoria Women's Sexual Assault Centre as a Clinical Counsellor. In 1996, Jude developed the Women Using Violence Counselling Program, a counselling and education program for women who identify as having a problem with violence toward their intimate partners.



## Working with Sexual Assault Survivors: Emerging Issues of Marginalization

1 out of 10 women report a sexual assault. It is therefore important for participants to understand the strategies and immediate response that is required to support survivors. Participants will gain an understanding of the complexities of sexual violence and look at skills-based mapping in multi-disciplinary settings with a focus on working with women who present with drug-facilitated sexual assaults, women who live on the street, as well as how other issues of marginalization interact with sexual assault response including issues of marginalization in sexual assault response.

*Janet Calnan is presently a clinical nurse leader at the Victoria General Hospital Emergency Department where she has worked since 1980. She became a Forensic Nurse Examiner in 1999 and since then has done over 250 cases involving child and adult sexual and domestic abuse. Janet teaches in the Forensic Department of BCIT on a part-time basis for the Forensic Nursing program and Sexual Assault Nurse Examiner Program. Janet works actively with the Women's Sexual Assault Center in Victoria where together with Police and Crown they have formed "Team Victoria" and meet regularly to help victims of sexual and domestic violence.*

*Karen Wickham works as the Sexual Assault Response Team (SART)/ Crisis and Information Line Coordinator at the Victoria Sexual Assault Centre and has been with VWSAC for over 22 years. She has been involved in the transformation of the SART team from a community-based support program to an integrated multi-disciplinary team involving Forensic Nurse Examiners, WSAC Support workers, multi-jurisdictional police forces (as requested by the survivor), Crown Counsel and the Vancouver Island Health Authority.*

## Thinking Outside the Box: Responding to Same Sex Relationship Violence

This workshop will present findings from focus group discussions held with service providers in Canada, the US, and Australia on their understandings and challenges when working to address violence in LGBTQ relationships. Participants will have the opportunity to discuss the implications of the research findings for their practice. We will also review and consider innovative approaches that are being developed and that can move us to think outside the box of established heteronormative anti-violence practices.

*Janice Ristock – see keynote bio*

## Empowerment and Advocacy with Families Coping with Loss

This workshop will provide a model of advocacy and empowerment based on the work of the panelists. It will provide an overview and analysis of a framework to support families of missing and murdered women. It will provide an understanding for workers when working with families facing the grief, loss and uncertainty of their missing and/or murdered loved ones. Participants will explore identifying the needs of the families and providing culturally appropriate resources, information and support. The justice related issues and practical assistance that is available in different communities will also be explored.

*Terry Swan – See keynote bio*

*Brenda Wilson – See keynote bio*

*Matilda Wilson – See keynote bio*

*Maryam Majedi is a Court Services Program Manager who helps victims and their loved ones deal with the aftermath of trauma by walking with them, step-by-step, through the criminal justice system. She is more committed than ever to ensuring that they are safe and have the supports needed to heal. She began her career in victim services as the Regional Manager of the Crown Counsel Victim/Witness Services in the provincial Ministry of Attorney General. Maryam was later appointed to the National Parole Board, Pacific Region.*



## Working with Women Using Substances

Following the model of harm reduction means looking for opportunities to provide information on how to use substances and/or live in at risk environments more safely, and to explore with the client perspectives that might lead to future change.

This workshop will provide a framework for working with women who are victims of violence and who use substances, working from a harm reduction model using motivational interviewing skills. Participants will examine their roles in assessment, and learn how to have necessary conversations about substance use in the context of violence.

**Bridgid McGowan** is an STV Counsellor and Program Manager at Surrey Women's Centre and the Safe Choices Coordinator at EVA BC. She is also in private practice. Bridgid has extensive experience working in women's organizations, is the former Executive Director of the Women's Addiction Foundation, and was an instructor for the Justice Institute Substance Use Certificate Program from 2006 to 2008.

**Cheryl Melder** has been a counsellor working with women, men, and adolescents for issues related to addictions, trauma, and concurrent disorders since 2007. Cheryl currently shares her time between private practice and her position at the Surrey Women's Centre where, since 2009, she has provided individual counselling to help women heal from the impact of trauma and violence on their lives. She has also developed and facilitated a psychoeducational and skills-based group for women who have experienced violence.

## Death by Culture: Achieving Cultural Competency in Domestic and Sexual Violence Cases

The workshop will provide practical tools to guide the important work of understanding the concepts of culture, competency and sensitivity in the delivery of service to women and in particular marginalized women dealing with sexual and domestic violence. Participants will gain valuable experience using case studies to examine both implicit and explicit biases and how their misinformation can impact their response in the support they provide. A suggested method and framework will be used to guide this critical analysis. Skills in cultural negotiation will be practiced to increase safety and achieve justice in the lives of women and children.

**Sujata Warrior** – see keynote bio.



# General Information



Please register early to ensure your space! While EVA BC can only offer travel, accommodation and childcare subsidies for one staff person from each Community-Based Victim Services program, Stopping the Violence (STV) Counselling program, and STV Outreach and Multicultural Outreach programs, you can send as many people as you like!

## Registration

To register for the training forum, please complete the attached 2-page form (one per person) and mail, with payment, by **January 30, 2012** to:

EVA BC  
728-602 West Hastings Street  
Vancouver, BC V6B 1P2

The registration fee includes your participation at the training forum, handouts and lunch and refreshments on the day(s) you will be attending. For an explanation of training forum subsidies, please see the Expense Claim Guide.

## Venue

The training forum will be held at the Sheraton Vancouver Airport Hotel, a wheelchair accessible venue located at 7551 Westminster Highway in Richmond, BC. We respectfully acknowledge the traditional territory of the Coast Salish people on whose land we will be gathering.

## Accommodation

We have reserved a block of rooms at the Sheraton Vancouver Airport Hotel, which is also the training forum venue. Please call the hotel directly at 604-273-7878 or 1-800-325-3535 (toll-free) or visit <http://www.starwoodmeeting.com/StarGroupsWeb/res?id=1111183163&key=CF1> no later than **January 30, 2012** to reserve your accommodation. Specify the Ending Violence Association of British Columbia (EVA BC) to receive the quoted rate of \$119 plus tax, for single or double occupancy.

## Getting to the Hotel

Hotel guests can take advantage of the free airport shuttle service from the Arrivals level of the Vancouver International Airport (YVR). Participants arriving by car can find directions at [www.sheratonvancouverairport.com](http://www.sheratonvancouverairport.com) (choose “Local Area” at the top, then “Directions” on the left). The hotel is also within a 10 minute walk of the “Richmond – Brighouse” Canada Line Station.

## Parking

Parking is available at the hotel, at a rate of \$17.62 per day for overnight guests and \$13.00 per day for non-overnight guests.

## Services

Odin Books will have resources available for purchase at the training forum. Two Massage Therapists and one Reflexologist will also be available to provide massage therapy and reflexology free of charge. Please reserve a spot with them directly on site. Overnight guests can take advantage of the hotel’s business and fitness centres, among other amenities.

## A Scent-Free Event!

Smoking and strong scents can make the training forum inaccessible for participants who are environmentally sensitive. Please help us create a scent-free environment by not using perfume, cologne and other scented products.

# Registration Form



## Emerging Issues in Anti-Violence: Working to Achieve Safety, Justice and Healing for Women and Children

To register, please mail the completed form (one per person) with payment by January 30, 2012 to: EVA BC, 728-602 West Hastings Street, Vancouver, BC V6B 1P2

### REGISTER BY MAIL ONLY!

Participant's name: \_\_\_\_\_

Agency name: \_\_\_\_\_

Program name: \_\_\_\_\_

Address: \_\_\_\_\_

City: \_\_\_\_\_ Postal code: \_\_\_\_\_

Phone: \_\_\_\_\_ Fax: \_\_\_\_\_

Email: \_\_\_\_\_

#### Please indicate which program/initiative you represent:

- Community-Based Victim Services Program (CBVS)
- Stopping the Violence (STV) Counselling Program
- STV Outreach and Multicultural Outreach Program
- Community Coordination Initiative

Other (please specify): \_\_\_\_\_

#### Are you the person designated by the program to submit an expense claim for subsidy?

No  Yes  N/A

#### Please check all that apply:

- I will be attending the EVA BC Special General Meeting on March 3, 2012.

#### Dietary requirements:

Vegetarian  Vegan (no eggs or dairy)

Food Allergies (please specify):  
\_\_\_\_\_

#### Accessibility requirements:

No  Yes (please specify): \_\_\_\_\_

#### Directory disclosure:

I do not wish to have my name and contact information published in the directory distributed to training forum participants.

# Registration Form



## WORKSHOP SELECTION

Please indicate your first and second choice for each day. We will do our best to accommodate your preferences.

1st choice	2nd choice
<input type="checkbox"/>	<input type="checkbox"/>
<input type="checkbox"/>	<input type="checkbox"/>
<input type="checkbox"/>	<input type="checkbox"/>
<input type="checkbox"/>	<input type="checkbox"/>
<input type="checkbox"/>	<input type="checkbox"/>
<input type="checkbox"/>	<input type="checkbox"/>

### Thursday, March 1, 2012

- Introduction to STV Counselling
- Introduction to STV Outreach and Multicultural Outreach Service
- Introduction to Community-Based Victim Service Work
- Domestic Violence and Children's Safety with a Focus on Empowerment and Effective Communication
- Working with Dissociation
- Working with Women Who Use Violence

1st choice	2nd choice
<input type="checkbox"/>	<input type="checkbox"/>
<input type="checkbox"/>	<input type="checkbox"/>
<input type="checkbox"/>	<input type="checkbox"/>
<input type="checkbox"/>	<input type="checkbox"/>
<input type="checkbox"/>	<input type="checkbox"/>

### Friday, March 2, 2012

- Working with Sexual Assault Survivors: Emerging Issues of Marginalization
- Thinking Outside the Box: Responding to Same Sex Relationship Violence
- Empowerment and Advocacy with Families Coping with Loss
- Working with Women Using Substances
- Death by Culture: Achieving Cultural Competency in Domestic and Sexual Violence Cases

## REGISTRATION FEES

In recognition of programs' financial constraints, EVA BC is pleased to offer reduced registration fees again this year. Please indicate the applicable fee below.

- \$165/person EVA BC member programs (i.e. STV, CBVS, ORS)
- \$175/person Members of Violence Against Women Coordination Initiatives or Students.  
If a Student, please provide School and student number: \_\_\_\_\_
- \$195/person Non-member programs and general registration
- \$110/person Single-day registration

*NOTE: Groups of five or more registrants from the same agency get a discount of \$20/person.*

**Registration payment enclosed: \$ \_\_\_\_\_**

- Registration forms must be accompanied by payment. Please make your cheque or money order payable to "Ending Violence Association of BC". **We regret that we do not accept credit cards.**
- Registration fee can be refunded until February 2, 2012 and is non-refundable after this date. A \$30 administration fee will be charged for each refund request.

*For more information, please contact the EVA BC office at 604-633-2506 ext 10.*

# Expense Claim Guide



## SUBSIDIES

### Expense Reimbursement

EVA BC is pleased to offer partial expense reimbursement to one staff person from each Community-Based Victim Services Program, Stopping the Violence (STV) Counselling Program, and STV Outreach and Multicultural Outreach Program. EVA BC will reimburse:

- 70% of travel, accommodation and childcare expenses that total less than \$800.
- 80% of travel, accommodation and childcare expenses that total \$800 or more.

Please designate one person per category who will submit an expense claim for reimbursement. The designated staff person will receive a travel/accommodation claim form in their training forum package. Claims must include expenses incurred by the designated participant only; groups cannot pool expenses and submit them as a single claim. **Original receipts must be submitted with claims within 7 days for reimbursement.**

Single-day registrants are eligible to receive the same subsidies for travel, childcare and one night of accommodation. If you require more than one night of accommodation, please contact EVA BC to obtain prior approval.

### Group and Special Rates

EVA BC also offers discounted registration fees for groups and students.

**Groups:** Groups of five or more from the same agency are eligible for a \$20 discount off each registrant's standard rate (see Registration Form for more details). Single-day registrants are not eligible for discount.

**Members of Violence Against Women Coordination Initiatives and Students:** Registrants are eligible for a special discount of \$20 off the general registration rate.

## ACCOMMODATION

Participants travelling more than 65 km one way from their office to the training forum venue are eligible for the accommodation subsidy for up to two nights. Those who have limited travel options or who wish to attend the Special General Meeting may be able to claim an additional night of accommodation. **Please contact EVA BC to obtain approval prior to booking.**

EVA BC has reserved a block of rooms at the Sheraton Vancouver Airport Hotel in Richmond at a rate of \$119/night plus tax. Participants must pay for their rooms up front and submit expense claims for reimbursement after the training forum. Claims must not exceed \$119/night plus tax. Private lodging is eligible for reimbursement at a rate of \$30/night. Please specify "private lodging" on your claim form.

## MEALS

Lunch and refreshments are provided on both days of the training forum. Due to funding constraints, EVA BC is unable to subsidize any additional meals. We hope that your agency is able to cover these costs.

## AUTOMOBILE TRAVEL

Participants traveling more than 32 km one way from their office to the training forum venue, can claim mileage subsidy at a rate of \$0.43/km.

If you plan to drive instead of fly, please note that mileage will only be subsidized up to the value of an advance, economy plane ticket from the same destination.

## PARKING

Parking costs are eligible for reimbursement.

## FERRY TRAVEL

The cost of ferry travel for automobiles and foot passengers is eligible for reimbursement.

## AIR TRAVEL

Air travel subsidy is based on seat sale and economy class prices. EVA BC strongly recommends that you/your agency purchase cancellation insurance, as we are unable to offer reimbursements on unused airline tickets. Please note that EVA BC is unable to reimburse you/your agency for the cost of cancellation insurance. Our recommendation for purchase is for your protection only.

## CHILDCARE

Please contact the EVA BC office at 604-633-2506 ext 10 for details.

## REGISTRATION FEE

The training forum registration fee is not eligible for reimbursement.